



## **2022 San Diego Crew Classic - Coaches Packet**

Saturday, March 26- Sunday, March 27

---

San Diego Crew Classic  
3699 Crown Point Drive  
San Diego, CA 92109



Welcome to the 2022 San Diego Crew Classic! This is our 49th year and we're excited to be back on the water after a couple of years off. Truly, 'The Rowing Season Starts Here'. We hope everyone has a fun, safe time over the weekend.

We want to say thank you to all of the competitors, sponsors, vendors, stewards, city employees, and volunteers who make this all possible. Enjoy the racing and enjoy San Diego. We look forward to seeing you all again for our 50th year in 2023!

**Bobbie Smith**  
**Executive Director**  
**San Diego Crew Classic**

**Mark Rose**  
**President**  
**San Diego Crew Classic**



## Welcome to the 2022 San Diego Crew Classic!

### Table of Contents:

- Section 1: [Registration](#)
- Section 2: [SDCC Rules 2022](#)
- Section 3: [Schedule](#)
- Section 4: [Eligibility/Compliance](#)
- Section 5: [The Race Course/ Practice & Traffic Rules](#)
- Section 6: [Racing](#)
- Section 7: Launch/Return info
- Section 8: Guidelines and Responsibilities
- Section 9: [Boat Storage](#)
- Section 10: [Venue Usage/Rules](#)

### Quick Resources:

[Schedule](#)

[Coxswains Check List](#)

[Traffic Pattern](#) in the area of the Crew Classic Course for all of Mission Bay during Crew Classic Week.

[Directions](#) for trailer drivers.



## Registration

Only the coach or team representative of record may pick up the packet for his/her crew at the Information Center. It contains wristbands that serve as entry passes, parking passes, maps of Mission Bay, a final schedule, where you can put your shells along the beach, etc.

Packets will be available to those who have met the following conditions:

- Trophy, if won last year, returned no later than noon Saturday March 27. A team will not be allowed to check in or race if their trophy has not been returned.
- Payment of all required entry fees, including penalty fees for late entries.
- Verification of eligibility for collegiate and club athletes.
- Confirmation of age and date of birth for junior and master athletes.
- Completion of the Vaccination [attestation form](#)
- Completion of the hotel questionnaire

Registration will be open for packet pick-up at the following times:

- Friday, March 25th- 8:00am-5:00pm
- Saturday, March 26th- 6:30am-5:00pm
- Sunday, March 27th - 6:30am-10:00am

### Wristbands:

**PLEASE NOTE - All Athletes need to have their wrist bands to be admitted.** Athletes without a wristband will be instructed to go to the Customer Service table near the main gate. Coaches will be called to bring a wristband to the athlete before they will be allowed to enter the event grounds. Wristbands are included in the Registration packet given to coaches/team representatives when they check-in on arrival to the Crew Classic.

Any athletes with a broken or lost wristband, should be sent to the Registration Tent where a replacement can be provided, upon confirmation.

## SDCC Rules & Regulations

All competitors are expected to adhere to the USRowing Rules as amended by the San Diego Crew Classic, Inc.

- All boats are stored off trailers on grass.
- Launch and land from the sandy beach.



- Boats may not leave the launch area without a coxswain.
- Coxswains may compete in multiple events, however races will not be delayed or rescheduled to accommodate coxswains.
- Some events may have seven lanes and multiple heats. If there are two heats, progression to grand final will be places 1 through 3 in each heat. If there are three heats progression to grand final be places 1 and 2 in each heat.
- USROWING RULES OF ROWING, as modified by Crew Classic documents, will be in force.

## Schedule

Heat Sheets can be found in the registration packets distributed to each team's coach or designated representative.

The most up-to-date schedule/results can be found at: [crewclassic.org/schedule](http://crewclassic.org/schedule)

**Coaches & Coxswains Meeting** - Sunday March 20th, 4:00pm. There is only one meeting and attendance of coaches and coxswains is mandatory.

[Progressions from Heats to Finals](#)

## Eligibility

### **USRowing Membership Requirements:**

The San Diego Crew Classic is a USRowing registered regatta.

### **U.S. based Organizations:**

All U.S. based organizations must hold active organizational membership with USRowing.

Organizational membership can be renewed at:  
<https://membership.usrowing.org/organization/index>.

Contact USRowing Member Services at (609) 751-0706 or [organizations@usrowing.org](mailto:organizations@usrowing.org) for assistance

### **Individual Competitors:**

Individual competitors representing U.S. based organizational members of USRowing and Unaffiliated U.S. based competitors must hold at least a Basic Membership and have a current waiver on file to compete in this regatta.



Memberships should be handled prior to arriving at the regatta. A current listing of your athletes, their member numbers, and expiration dates can be found on your online team roster through the membership portal at <https://membership.usrowing.org>.

### **International Competitors:**

International competitors can join USRowing as Basic – International members at no cost but it is not required. International competitors that have not joined as Basic – International members will be asked to sign a paper copy of the USRowing Waiver in order to participate. International competitors representing a U.S. based organization must comply with the Individual Competitor requirements above.

The SDCC is requiring that line-ups be submitted online through RegattaCentral for the regatta. Entries may be saved initially without a line-up, but please be prepared to submit a final line-up.

### **Club:**

- “Club” shall mean any entity recognized by USRowing as an organizational member that operates or sponsors a rowing program.
- Only Competitors who are bona fide members of a Club shall be entered by that Club, except that a composite Crew may be entered by any of the Clubs to which one of the Competitors in the Crew belongs.
- A Competitor shall represent only one Club at a Regatta.
- Composite Crews: Composite Crews are those that include Competitors from more than one Club and/or Unaffiliated Competitors. Such Crews shall be ineligible to receive points or other scores used to determine Team trophies or awards. Once a Crew has been entered as a composite Crew, it shall remain so, regardless of subsequent substitutions.

### **Forms:**

[Boat Line-up Form](#) to submit line-up and certification of eligibility. The form must be submitted on Regatta Central.

All Masters and Juniors must complete birth date and age information.

All Regatta participants who must meet a weight requirement are required to weigh-in wearing normal rowing attire. Only one weigh-in will be required for the weekend.



Confirm that all USRowing waivers have been signed and submitted online IN ADVANCE. We will not have waivers printed for you to fill out at the regatta site.

## Race Course & Practice Information

**During the week before the Crew Classic** Practice is allowed. Please stay clear of motorboats installing the course and refer to the published traffic pattern available on the following page. Barring unforeseen circumstances, the racecourse will be in place by Thursday, March 24.

**On the weekend of Crew Classic**, the course will be available for practice on Saturday evening from one half-hour after racing to one half-hour after sunset. **No course practice Saturday morning, Sunday morning or Sunday evening.** At these times and during racing, crews may practice in North Pacific Passage. Shells returning to San Diego boathouses or practicing elsewhere are subject to traffic control during racing and must have an escort to cross the course. The Beachmaster will have updated information, and all crews practicing during racing should check out with the Beachmaster.

COACHING LAUNCHES are permitted on the course during practice, subject to the rules and traffic patterns. The Crew Classic does not offer launches for hire.

- Launches may not be launched from the shell launching areas but may be launched in the north cove, along the fence.
- As a courtesy to all competitors, it is requested that coaching launches refrain from motoring within the race course during practice sessions on Friday.
- To keep the beach clear for shell traffic, return launches to trailers by Friday evening and keep them there for the weekend.
- Loose or unattended launches will be impounded at 4:30 am Saturday.

Traffic Pattern: Each crew is responsible for obeying all publicly posted or provided traffic patterns for this event. Coxswains should carry a copy of the Mission Bay Traffic Pattern Map for the Crew Classic, available on our website.

It must be clearly understood that only the Fiesta Bay portion of Mission Bay is under the control of the San Diego Crew Classic and only from 6 am to 7 pm on both Saturday and Sunday. Crews are responsible for their own actions or omissions and must be alert to general boat traffic at all times. Each crew must adhere to all water safety laws and safety practices. Flagrant safety violations will jeopardize a crew's chance to participate in the Regatta. Rowing against the traffic pattern, disobeying directions of course monitors and





practicing on the racecourse one half-hour after sunset are considered flagrant safety violations.

For digital map of race course, visit: <https://crewclassic.org/race-resources/#practice>

#### Race Week Traffic Pattern:



#### Race Day Traffic Pattern:







## Racing:

### Rules of Racing:

USRowing Rules of Rowing, as modified by Crew Classic documents, will be in force.

- [USRowing Rules of Rowing 2022](#)

### Objections and Protests:

Please see USRowing Rules of Rowing Section 2-604 to 2-608 for rules in regards to lodging an objection on the water and a formal protest.

NOTE:

- Protest Forms are available at the Beach Master tent and at the Finish Line Referee area.

### Race Winners:

Race Winners should arrive at the Awards Station no later than 30 minutes from their Final's posted start time. This will ensure that all awards are presented in a timely fashion and all award presenters are available.

## Launch & Return Information:

**IMPORTANT NOTE:** While **incredibly unlikely** you'll encounter anything, we ask that you be mindful of ocean creatures that may make their way into Mission Bay/Crown Point when launching. Oftentimes, stingrays bury themselves under a thin layer of sand and stepping on one could entice an unfortunate reaction. The Stingray Shuffle is all that is necessary to avoid any altercations with stingrays or other ocean animals while launching from Crown Point - **The Stingray Shuffle** is simply "sliding your feet along the sand instead of taking big steps." These sliding movements create vibrations, which will scare any potential stingrays away and avoid any potential conflicts. Easy as that.

### Launching

Before launching please ensure you have completed the following:

- Heel ties & bow ball are secure - will check at Beach Master Station
- Correct bow numbers are attached to boat



- Flashers (pieces of colored tape with your race number and lane number) are issued after you check-in with Beach Master Control, please make sure the boat is dry to allow these to adequately stick. They should be put on the outside of the boat gunnels toward the stern

Please plan to depart toward the Beach Master Control Station approximately 45 minutes prior to your race.

You will be WET LAUNCHING from the beach surrounding Crown Point. Please shuffle your feet as you enter the water (see above) and walk out until you are approaching knee-deep. This will ensure you don't damage any skegs/rudders as you lower your boat into the water.

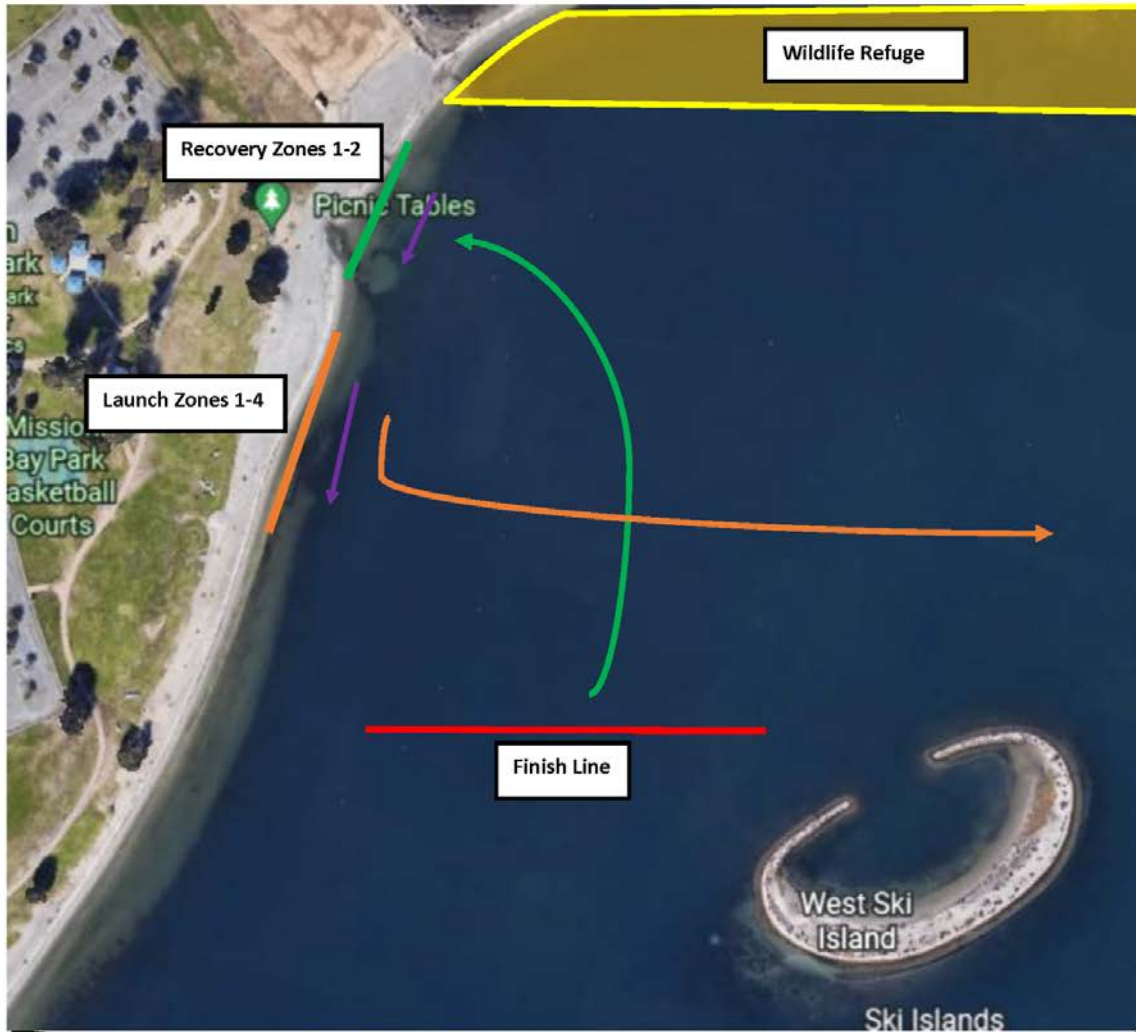
At the Beach Master Station, you'll be directed to one of four launching zones. Join the queue at your Launch Zone and wait for your turn to enter the water. Each zone will allow one boat to launch at a time. This will require a **90 second limit once your hull touches the water** before you'll be expected to depart in the direction of the start line. You can finish tying in on the water once you've passed Crescent Island. There will be volunteers at each zone to help you get launched in a quick and timely manner.

### Return


Upon completing the race, please pull straight ahead to clear the finish-line and do not sit in place immediately upon crossing the finish.

- Boats have 90 seconds upon landing to remove their boat from the beach. Please have rowers/assistants available to help carry oars up from the boat so that we can get boats overhead and move away from the water as soon as possible.
- Do not immediately turn towards shore and paddle into the Launch Zones, no matter where your boats/tents are located. We ask that all crews pull up to the Recovery Zones and exit the waterway from there.
- If you would like to take a cool down lap after completing your race, please pull forward past all launching crews before turning right and re-entering the queue of boats leaving for the starting line.

See map on follow page or view at link here: [Launch/Recovery Map](#)



**KEY**

- Direction of Bow 
- Launch Area / Launch Traffic Pattern 
- Recovery Area / Recovery Traffic Pattern 
- Do Not Enter This Area 





## Boat Storage & Trailer Parking:

### Boat Storage

ALL SHELLS MUST BE LOCATED AS DESIGNATED on the Beach Map and Crew Locator when they become available in March. Our beaches are filled to capacity. Everyone's cooperation is needed for smooth operations. The map is meant to be a guide only. Place your boats within the designated area marked on the grass.

All shells are stored in and launched from the Regatta site during the Regatta and are not stored on trailers. Shells should be in place no later than noon on Friday to aid inspections (see below), which will occur all day.

The map shows the general area where your shells are to be placed.

When you arrive, you will find each area is on grass, clearly marked with the letter you see on the map, and outlined in chalk.

You may put your shells ONLY within your assigned chalked area, PARALLEL to the lines separating one area from another. Please note that some are on the diagonal compared to adjacent paved areas.

North Areas, near the Dirt Lot Trailer Parking, are on an extreme diagonal with an access aisle down the middle separating them.

Bay Side Areas, on the bay side of the walkway and south of the Sheltered Picnic Area are tandem with shells one behind the other.

Please respect others by not obstructing the access aisles or rigging/unrigging in an interfering area or manner.

### Boat Inspection

All boats must pass through "Launch Control" to have heel-ties and bowballs inspected. **There will be no pre-check** and failure to pass through the beachmaster control station will result in disqualification.

It is incumbent on all participating organizations to ensure that all equipment used in the regatta is in full compliance with USRowing Rules and prevailing safety standards. Ensure that older equipment used during the regatta is in good repair before its arrival in San Diego. Any shell in such disrepair is likely to sustain breakage under stress WILL NOT BE ALLOWED TO RACE.

No shells will be allowed to race without all heel ties, bow ball, bow number and flashers.



### Trailer Parking and Directions

Please make trailer drivers and crews aware of parking plans and locked gates. We are short of space. Help Regatta efficiency and access to your trailer by parking within lined spaces or as indicated by Regatta personnel.

- Do not plan to deliver your trailer to the Park before Wednesday, except during daylight hours. There are gates that are locked overnight. Limited security begins at 5:00 pm Wednesday. [Here's a Google Map for your convenience.](#)
- No cars or vans in the Trailer Lot throughout the week. After parking trailers, vehicles are required to disconnect and, during the week, use only paved parking lots.
- On Saturday and Sunday the trailer area gates will not be staffed for repeat entry/exit by towing vehicles. If these vehicles are to be used for transportation around town, they will need a vehicle pass and must be parked in the Crew Parking Lot.

Directions: TRAILERS – DO NOT APPROACH THE SITE BY GOING NORTH ON CROWN POINT DRIVE – DIFFICULT TURNS ARE REQUIRED WHICH MAY RESULT IN DAMAGE TO THE SHELLS.

#### From I-5, Southbound

Take the Balboa and Garnet Exit. Go right (west) on Garnet Street to a Y junction and stay left onto Balboa. Where Balboa merges with Grand Avenue, turn left onto Lamont Street. Go straight (south) on Lamont Street to the "Yield" sign at Crown Point Drive. Go straight ahead; trailer parking is down the hill in a dirt lot on your left or, if directed, on the closed portion of Corona Oriente. Please park carefully.

#### From I-5 Northbound

Exit I-5 at Grand and Garnet. Turn left (west) at the first left (Grand), then left on Lamont Street and straight ahead to the "Yield" sign at Crown Point Drive. Crew cars, vans and shell trailers go straight ahead; trailer parking is down the hill as described above. Crew buses must use the southernmost entrance to the park, at Crown Point Drive and Corona Oriente.

#### From Interstate 8 Westbound

(This apparent detour makes your drive much easier, if you chose to ignore it do not enter Crown Point Shores Park from Crown Point Shores Drive until you reach Lamont Street as this is one of the bad turns.)

Take I-5 North, and follow the directions immediately above, "From Interstate 5 Northbound". This route avoids at least one difficult turn for long trailers.



## Venue Rules & Regulations:

### Drone Usage:

Personal drones and/or any other drones not associated with the San Diego Crew Classic's race coverage will NOT be allowed. Unauthorized drone use creates an athlete safety concern as well as a logistical issue for the race video team. For the sake of a timely and safe race, please refrain from drone use for the duration of the race weekend.

**Please be aware that these are enforced by the City of San Diego Park Rangers and Police Department; Mission Bay Park is a City of San Diego park.**

Participants in the races (CREWS) are issued wristbands and parking passes by their COACHES. The coaches receive these wristbands and parking passes when they check in on their arrival at the Crew Classic.

CREW assigned parking is in the North (Yellow) paved lot. The parking passes are yellow. Only vehicles with these passes may park free in the CREW lot and EVERY person in the vehicle must have a wristband. A trailer with rowing shells must park in the dirt lot only or on the "road closed" area when directed to do so. NO EXCEPTIONS.

Parking passes and wristbands may only be obtained from the coach. If no one in the vehicle has a wristband, then one person may enter the venue to find the coach or the coach may enter to properly check in. Without a pass, a vehicle must park on the street and send someone with a wristband into the venue to find the coach. NO EXCEPTIONS

General Park Rules Everyone pays to park and enter the event unless they have a pass, or are on the Valet list. A free shuttle is available from Ski Beach at Vacation Isle.

- NO BIKES (lock them to the outside of the fence).
- NO SKATES (may carry them over your shoulders if you have other shoes).
- NO DOGS or other pets (except service dogs) in city parks, including parking lot
- NO GLASS CONTAINERS.
- NO ALCOHOL, except in the designated areas- This is a City ordinance which will be enforced by Park Rangers and Police Officers who are required to be on site during the event. No alcohol may be brought into the event venue or consumed in the parking lots.
- NO BALLOONS.
- NO SMOKING in any City of San Diego park, including parking lots.
- Zero tolerance for pranks, including removing decorations and other goods.
- NO POP-UP OR OTHER KINDS OF TENTS INSIDE THE VENUE except those specifically authorized by the Crew Classic.
- Nothing can be tied to anything in the park. Nothing can be put in the ground. No banners on trees or buildings. NO STAKES IN THE GROUND.
- NO LARGE UMBRELLAS
- NO EXCEPTIONS