

# SAN DIEGO CREW CLASSIC

The Coaches and Athletes meeting  
will begin at 4:00 p.m. PDT





# THANK YOU TO OUR SPONSORS

Legacy Sponsor



Platinum Sponsor



Gold Sponsor



Silver Sponsor



GINA AND STEVEN

CONSIDINE



Bronze Sponsor



PHILADELPHIA INSURANCE COMPANIES

A Member of the Tokio Marine Group



In-Kind Sponsor



**SPONSORED BY:**



**MARINES**



# AGENDA

- Attestation
- Race Staff
- Code of Conduct
- Venue Arrival
- Park Rules
- Parking Rules
- Registration
- Boat Storage
- Shell Inspection
- Practice
- Launch and Recovery
- Traffic and Hazards
- Coxswain Information
- Racing and Safety
- Schedule & Progressions
- Results
- Medals & Trophies
- Questions





# ATTESTATION

**This meeting is mandatory for all teams.**

**At least one representative for each team must be present.**

**You will be required to sign and fill out an attestation form when picking up your registration packet.**

**If your packet is not picked up by end of the day Friday, we will call you to ask you to pick it up.**





# 2025 San Diego Crew Classic

## Event Schedule

27  
MAR

12:00 PM - 6:00 PM

12:00 PM Registration Opens  
6:00 PM Registration Closes

28  
MAR

8:00 AM - 7:00 PM

8:00 AM Registration Opens  
9:00 AM Fit to Win: Marines Morning Warm Up/Jumbotron  
10:00 AM A Long Talk - Champions Pavilion  
12:30 PM USRowing Town Hall (Club 73)  
2:00 PM Beer Garden Opens  
2:25 PM National Anthem/USMC/Grand Marshall LtGen Bobbi Shea - Commanding General of Marine Forces Command  
2:30 PM Racing Begins  
4:30 PM Presidents Dinner sponsored by USMC  
5:02 PM USMC/USNT Exhibition Races  
5:15PM Racing Ends  
7:00 PM Grounds close

29  
MAR

7:00 AM - 6:00 PM

6:00 AM Registration Opens  
7:00 AM Champions Pavilion VIP Area Opens  
7:10 AM National Anthem/USMC  
10:00 AM Beer Garden Opens  
1:00 PM USRowing Town Hall (Club 73)  
1:00 PM San Diego State Boat Dedication (Trophy Stage)  
1:28 PM OarBoard Exhibition  
1:43 PM US Pararowing Races  
1:52 PM Survivors Rowing Network Exhibition Row  
5:00 PM Racing Ends  
6:00 PM Grounds/VIP/Beer Garden Close

30  
MAR

7:00 AM - 6:00 PM

6:00 AM Registration Opens  
7:00 AM Champions Pavilion Brunch and Club 73 VIP Area Open  
7:10 AM National Anthem/USMC  
7:15 AM Racing Begins  
9:00 AM Young Lions Conservatory (Champions Pavilion)  
10:00 AM Beer Garden Opens/VIP (Alcohol service begins)  
2:40 PM Foundation Challenge Dashes  
3:05 PM Racing Ends  
6:00 PM Grounds, VIP and Beer Garden Close

MORE  
INFORMATION

[crewclassic.org](http://crewclassic.org)





# RACE STAFF

**Chief Referee:**

Trinath Goteti

**Deputy Chief Referee:**

Melanie Salter

**VP Race Operations:**

Craig Doan

**Beachmaster:**

Lex Switzer

**VP Water Operations:**

Russell Moore

**VP Shore Operations:**

Robert Lopez

**Volunteer Coordinator:**

Beth Kiernan

**Executive Director:**

Bobbie Smith

**Assistant to the Director:**

Janet Warncke

**President:**

Mark Rose





# CODE OF CONDUCT

The San Diego Crew Classic does not tolerate or condone abuse, bullying or other inappropriate behavior.

All regatta participants will be expected to adhere to the USRowing Code of Conduct and the USRowing SafeSport policy.

Individuals or teams found to be in violation of these policies will have their tickets and/or wristbands confiscated, and will be banned from the regatta grounds for the duration of the event.



**CODE OF CONDUCT**



**SAFESPORT POLICY**





# VENUE ARRIVAL

**Crown Point Shores will be closed to the public starting on Monday, March 24 at 4:30 am. Participants may not be present on venue when construction is underway**

## TRAILER ARRIVAL

- Trailers may arrive starting on Tuesday, March 25 at noon, by appointment
- Trailers arriving Tuesday and Wednesday will need to make individual arrangements with site management staff to access venue
- Trailers arriving on Thursday and Friday may access the venue starting at 6:00am--boats should be unloaded and in their corrals by Friday at noon.

## TEAM ARRIVAL

- No teams are allowed on site until venue construction is complete. We cannot make exceptions due to safety and liability concerns -- **NO GROUNDS ACCESS ON WEDNESDAY, MARCH 26**
- This includes coaching staff, support staff and riggers
- Teams must complete registration before entering the venue to rig and row--registration opens Thursday at noon

## ALUMNI/TEAM TENTS

- Access to team/alumni tents will open on Thursday, March 27 at noon.





# PARK RULES

Mission Bay Park is a City of San Diego park. The Crew Classic enforces City of San Diego park rules in compliance with our permit. San Diego Police and Park Rangers will be on site to monitor compliance with park rules.

- Everyone pays enter the event unless they have a pass or credential - students may enter free with ID
- Foot traffic only venue: bikes, e-bikes, skates, rollerblades, scooters, skateboards and hoverboards are not allowed
- NO VEHICLES allowed to drive on venue
- NO DOGS or other pets (except service dogs) in city parks, including parking lots
- NO GLASS containers (beverages, condiments, tent decor etc.)
- NO BALLOONS
- NO SMOKING in city parks, including parking lots
- NO TENTS except those officially authorized and permitted by the Crew Classic
- NO STAKES IN THE GROUND or tying anything to trees, signs or buildings
- NO LARGE UMBRELLAS
- NO FOOD OR DRINK to be sold or provided to the general public. Food may be brought for private use
- NO ALCOHOL except in designated SDCC areas
- NO DRONES except those officially authorized and permitted by the Crew Classic





# PARKING RULES

Parking is very limited at Crown Point Shores. We thank all our participants for your cooperation in making sure everyone is able to access parking by adhering to SDCC parking rules.

- There is no paid parking at Crown Point. The YELLOW LOT is reserved for team vehicles with yellow lot passes. All other parking is first come, first served
- Every person in a vehicle utilizing the YELLOW LOT must have a competitor wristband
- Competitors are issued wristbands and parking passes by their coaches. The coaches receive these wristbands and parking passes in their registration packets
- If no one in a vehicle has a wristband, one person may enter the venue to find the coach or the coach may enter to collect the registration packet. Without a pass, a vehicle must park on the street or in the GREEN or RED LOT and send someone with a wristband into the venue to find the coach
- Trailers with rowing shells must park in the dirt lot only or on the “road closed” area when directed to do so. Towing vehicles may not be left in the trailer lot.
- Parking is only allowed in designated areas. Cars parked in no parking areas may be ticketed or towed.





# PARKING MAP



**CROWN POINT PARKING**



# ADDITIONAL PARKING MAP





# REGISTRATION

**ONLY THE COACH OR TEAM REPRESENTATIVE OF RECORD may pick up the packet for their crew at the Information tent.**

## REGISTRATION HOURS:

- Thursday: 12:00 pm - 6:00 pm
- Friday: 8:00 am - 4:30 pm
- Saturday: 6:00 am - 6:00 pm
- Sunday: 6:00 am - 2:00 pm

## PACKET CONTENTS:

- Competitor wristbands that serve as admission passes
  - each ENTRY will receive ONE wristband for staff
- Parking pass - each team gets ONE yellow lot pass
- Maps of Mission Bay
- Schedules for racing and awards
- Boat corral assignments



**PACKETS MUST BE PICKED UP IN ORDER TO BE ELIGIBLE FOR COMPETITION**



# REGISTRATION

**Every participant on the team roster must be compliant for the team to receive their packet. Please ensure all competitors have completed the following items prior to attempting packet pickup:**

## ITEMS FOR REGATTA CENTRAL COMPLIANCE

- USRowing Membership
- SafeSport completed if necessary after self attestation
- USRowing Waiver
- Lineups - due last Monday
- Attestation for Coaches and Coxswains Meeting

## ADDITIONAL REQUIREMENTS

- Trophy/-ies, if won last year, returned no later than NOON ON FRIDAY
- Payment of all required entry fees, including penalty fees for late entries
- Verification of eligibility for collegiate and club athletes
- Confirmation of age and date of birth for youth and masters athletes
- Hotel Survey
- Brick and Mortar designation, as applicable





# BRICK & MORTAR

Clubs wishing to be eligible for Brick & Mortar designation must have their materials submitted to the Crew Classic for review no later than **Tuesday, March 25 at noon.**

## ITEMS FOR BRICK & MORTAR VERIFICATION

- All members of the crew including coxswain must live within 50 miles of the club boathouse
- All crew member addresses and boathouse address must be submitted no later than MARCH 25.

## OTHER

- Brick & Mortar Clubs will be demarcated on SDCC timing and results materials by an asterisk [ \* ]
- Brick & Mortar Clubs in trophy races will be eligible for medals if they do not win an event outright but are the fastest B&M club; however only the overall winner will receive the trophy
- Please use good sportsmanship and good judgement when submitting verification for your club



# BOAT STORAGE

**Crown Point Shores beaches are filled to capacity--we thank everyone in advance for cooperating with boat storage guidelines**

- All shells must be located as designated on the Beach Map and Crew Locator (alpha and area). Place your boats within the designated area marked by cones on the grass
- All shells are stored in and launched from the Regatta site during the Regatta and are not stored on trailers or at local boathouses. Slings and/or racks are not provided
- Shells may be unloaded between 8AM ON THURSDAY and NOON ON FRIDAY. Please plan to be in place by this time to aid in inspections, which will take place all day Friday
- You may put your shells ONLY within your assigned corral area, parallel to the lines separating one area from another
- North Areas near the Dirt Lot Trailer Parking are on an extreme diagonal with an access aisle down the middle separating them
- Bay Side Areas on the bay side of the walkway and south of the Sheltered Picnic Area are tandem with shells one behind the other
- Please respect others by not obstructing the access aisles or rigging/de-rigging in aisleways





# BOAT STORAGE



# SHELL INSPECTION

It is the responsibility of all participating organizations to ensure that all equipment used in the regatta is in full compliance with USRowing Rules and prevailing safety standards

- Beachmasters and/or Race Officials will inspect for condition and USRowing release/coxswain requirements before the Regatta. This includes placing a colored zip tie on the bow ball. Do not remove this zip tie before the shell's last race
- Any shell in such disrepair it is likely to sustain breakage under stress will not be allowed to race
- No shells will be allowed to race without bow ball and heel ties





# PRACTICE

All Crew Classic participants must adhere to the published practice rules and schedule. Crews not complying with regatta staff or officials are subject to disciplinary action that could impact their ability to participate in the regatta.

## PRACTICE SCHEDULE:

Wednesday: **NO PRACTICE**

Thursday: **12:00pm - 6:00pm**

Friday: **8:00am - 1:00pm**

**5:00pm - 6:00pm**

Saturday: **5:00pm - 6:00pm**

Sunday: **NO PRACTICE**

Last launch is 40 minutes before the close of the practice window

Crews must be landed by the close of the practice window.



# LAUNCHING & RECOVERY

The Crew Classic is a WET LAUNCH venue. No docks are available to launch or land.



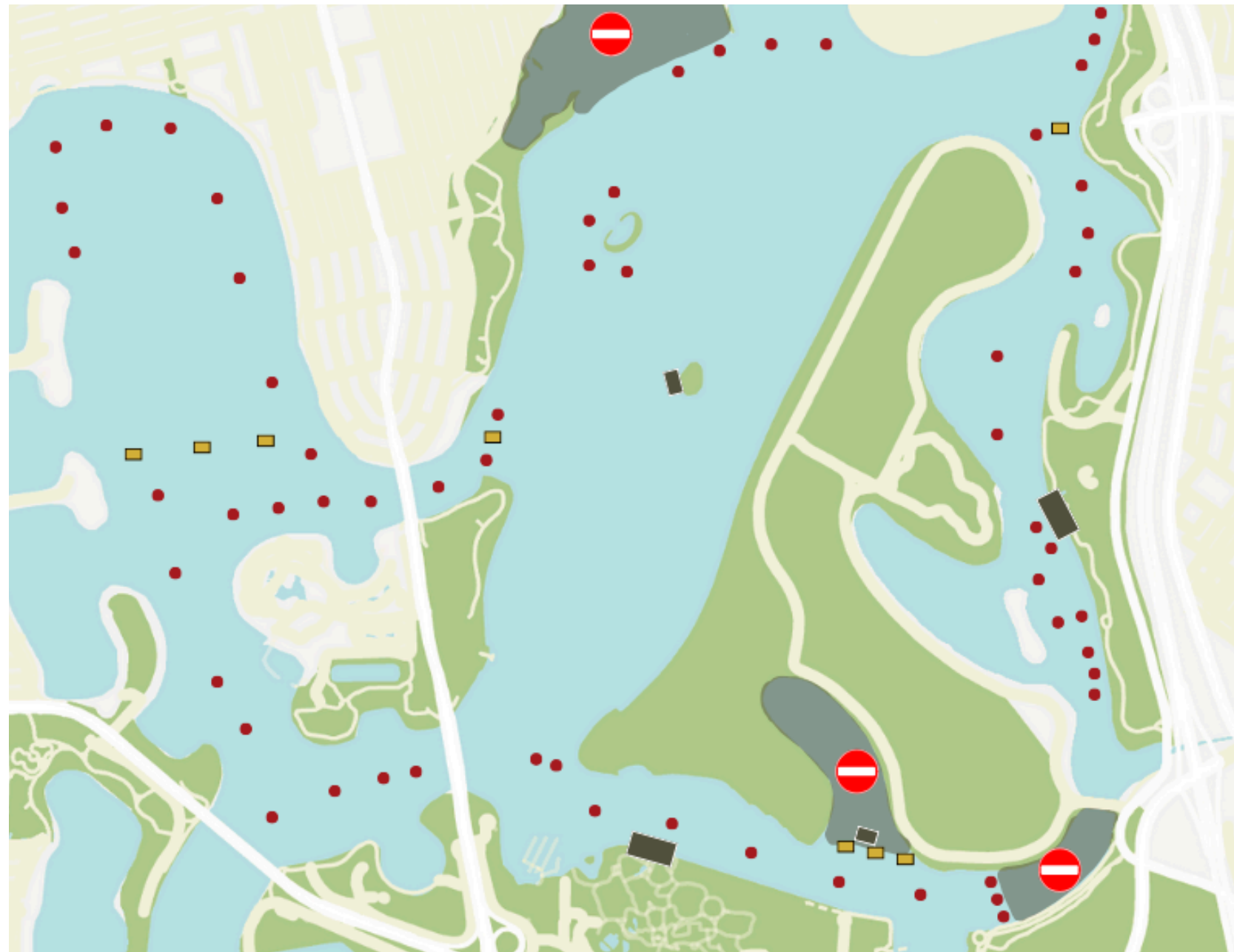
- Bows will always face the start line for both launching and landing crews
- Launching crews will launch from the north end of the beach
- Oars and other equipment should be ready on the beach before you walk your shell to the launch zone
- Crews will have 90 seconds from the point their shell touches the water to load and leave the launch zone
- DO NOT LAUNCH in front of a race
- Complete tie in and adjustments after rowing clear of the launch zone
- Crews may not launch earlier than safety launches (likely 6:15am)





# MISSION BAY: HAZARDS

Mission Bay can be challenging to navigate for those unfamiliar with its landmarks and on the water markers



- Please note the two types of buoys on Mission Bay: yellow signs and white channel makers
- On overcast days and during sunrise, channel markers can be difficult to see
- Mission Bay is TIDAL and tides can impact steering around buoys. Give all buoys plenty of space when making turns
- There are docks/fixed structures on Radar Island, in Sea World Channel and Tecolote
- The Crew Classic only has control over traffic in the Bay during racing hours. Use caution when rowing outside of controlled hours

# TRAFFIC PATTERN: PRACTICE

In effect from 4:00 am Monday, March 24 until 2:00 pm Friday, March 28  
and during practice hours on Saturday



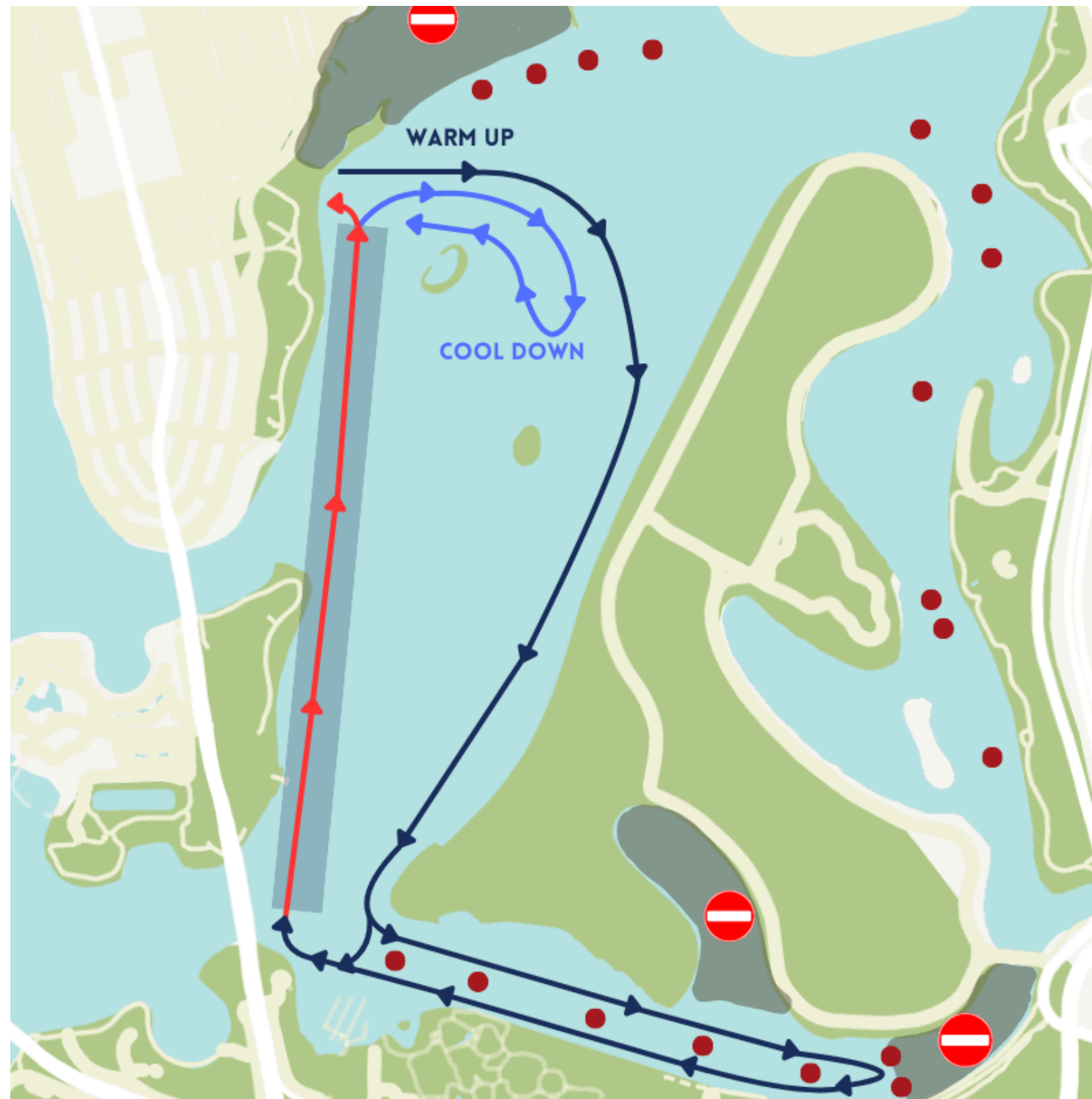
- Traffic through Long Bridge is ONE WAY west to east
- Traffic through Short Bridge is ONE WAY east to west
- SDCC race course buoy installation will begin on Monday, March 24
- Stay out of DO NOT ENTER zones
- Be mindful of heavy traffic areas around the start, finish, and exiting East Bay through Short Bridge (1k/gazebo)





# TRAFFIC PATTERN: RACING

In effect from 2:00 pm Friday, March 28 until 4:00 pm Sunday, March 30



- No traffic to/from West Bay except during designated rowback windows for local crews
- Stay out of DO NOT ENTER zones
- Safety launches are present for everyone's wellbeing. Follow all instructions from safety marshals
- Look for the check-in boat with the yellow flag before proceeding into Sea World Channel
- Tecolote/Pacific Passage is not part of the official traffic pattern for race day



# COXSWAINS

We will have over 400 crew entries on Mission Bay over the weekend.  
Coxswains must understand all rules for launching, check in, traffic and racing

- **HOT SEATING:** crews who are hot seating should see the Beachmaster for instructions
- Check shell and equipment in all ways for race readiness
- Plan to be underway at least 45 minutes prior to your start time
- Requirements for launching:
  - bow ball
  - bow number-alphanumeric
  - zip tie
  - flashers applied to exterior of stern
- Double check the information in the Coxswains checklist (available to download at left)



Example of correct flasher application

**FINAL CREWS: MAKE NOTE OF YOUR SCHEDULED AWARDS TIME BEFORE YOU LAUNCH**

PDF

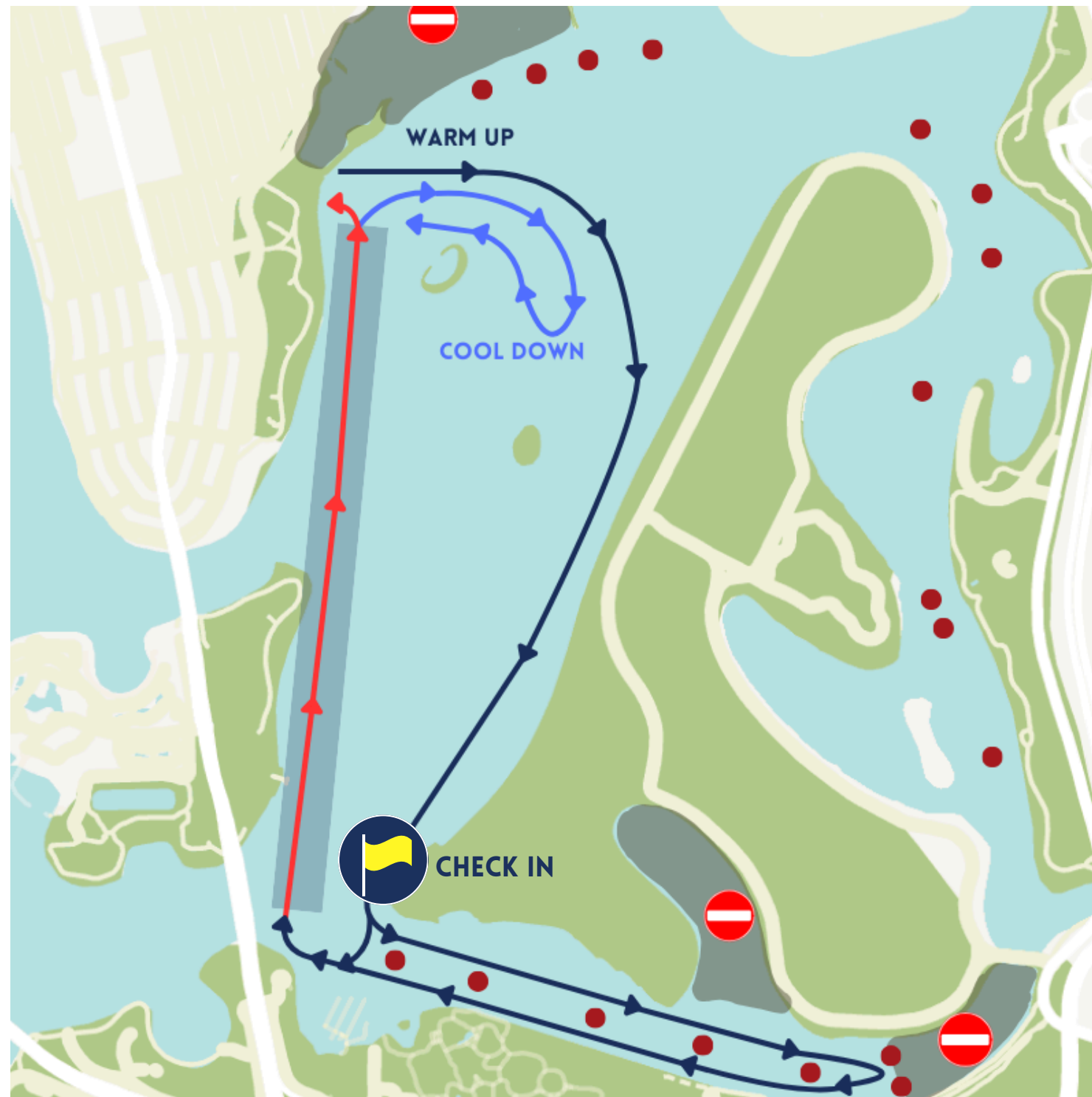
DOWNLOAD  
COXSWAINS  
CHECKLIST





# COXSWAINS

We will have over 400 crew entries on Mission Bay over the weekend.  
Coxswains must understand all rules for launching, check in, traffic and racing



- Proceed east and stay on the north side of West Ski Island
- Turn southeast and proceed along the shore of Fiesta Island on the east side of Radar Island
- Locate the check in boat with the large yellow flag at the corner of Sea World Channel
  - identify your crew, event number, and lane number and receive acknowledgement before proceeding in to Sea World Channel (warm up loop)
- Warm up in a clockwise pattern using the white channel markers as center line delineation

PDF

DOWNLOAD  
COXSWAINS  
CHECKLIST



# COXSWAINS

We will have over 400 crew entries on Mission Bay over the weekend.  
Coxswains must understand all rules for launching, check in, traffic and racing

## BREAKAGE or DAMAGE:

- If you experience breakage after launching and you can continue to row, proceed to the check in boat at the corner of Sea World Channel and report the issue there. The check in boat can relay needs to your coach/rigger and tools or parts can be brought there quickly.
- If you have a serious issue and you cannot continue to row, signal a safety launch or official so they can provide immediate assistance

## SCULLING FOR ALIGNMENT:

- if you are not familiar with how to keep your bow pointed straight off your stakeboat at the start, please watch this video for instruction:  
<https://readyallrow.org/video-of-the-week-stake-boat-tips-tricks/>

## CATCHING THE DIAGONAL:

- Without taking proper care for alignment and steering it is possible to catch the diagonal, which causes a crew to row at a 45 degree angle to the 2k course.
- Lane lines should be either yellow or green. If a lane line is alternating yellow and green, you have caught the diagonal and must correct your course to re-enter your assigned lane

A red rectangular button with the white text "PDF" inside, positioned over a white document icon with a folded corner.

DOWNLOAD  
COXSWAINS  
CHECKLIST





# FOUNDATION CHALLENGE EVENTS

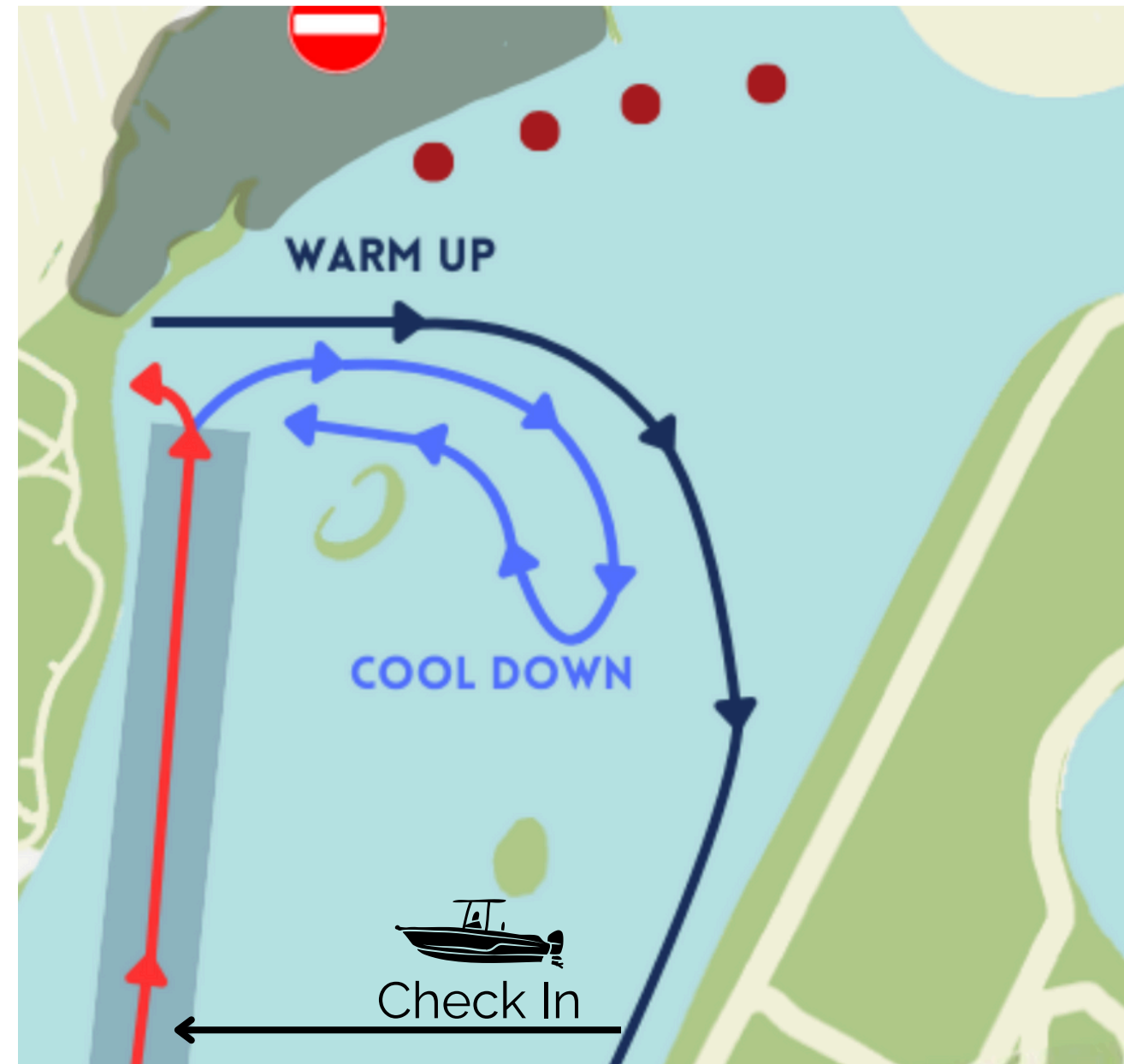
**Sunday March 30, Masters Dashes**

- **Warmup:** Will be to the 1000m marker, where there will be a check in boat
- **Boats will be called onto the course by referees. Teams may not proceed onto the course until they are called upon by the referees.**
- **Boats will then move to the 500m mark together**
- **Start will be floating start, coxswains must listen to the referees**
- **Finish line will be traditional San Diego Crew Classic finish line**



# FOUNDATION CHALLENGE EVENTS

Sunday March 30, Masters Dashes





# REFEREES AND RACING

**San Diego Crew Classic referees prioritize safety, fairness, and ensuring that every competitor can race.**

## **PRE-RACE and STAGING AREA:**

- Know your race number and lane number
- The Start Marshal will call you in to the staging area when the race before yours has loaded
  - the starting platform will display the race number that is currently being loaded and started
- Stay with/near other crews in your race and try to enter the course in bow number order
- You will be directed to enter the course when the preceding race has passed the 100m mark
- All crews must be locked on to their stake boat 2 minutes before the announced start of their race
- Be prepared for crosswind and tidal current at the start
  - all sweep and sculling crews must be able to align themselves while locked on to the stakeboat by sculling the bow around if necessary
  - please practice this skill before arriving in San Diego
- When choosing your alignment, identify a point or landmark in the distance



# REFEREES AND RACING

San Diego Crew Classic referees prioritize safety, fairness, and ensuring that every competitor can race.

## THE START ZONE:

- The standard starting procedure will include:
  - the Starter polling all crews by name
  - the Starter will call "Attention" ; raise a red flag ; variable pause ; say "Go" and drop the flag
  - when the flag moves, the race has started
  - there will be no lights, buzzer, or boots
- If weather or some other circumstance prevents the Starter from using the standard starting procedure, the Starter will declare a "Quick Start" --followed by the starting commands and flag
- If a crew starts before the movement of the flag, the Judge at the start will stop the race and issue a warning for a false start
- The first 100m are the start zone. If you experience breakage inside the first 100m, and want to re-start, stop immediately and quickly get the attention of the following referee. The referee will ask to see the breakage
- Once your bow ball crosses 100m the race is active and you have accepted the start as fair





# REFEREES AND RACING

San Diego Crew Classic referees prioritize safety, fairness, and ensuring that every competitor can race.

## BODY OF THE RACE:

- Every crew is responsible for their own steering
- **WHITE FLAG**
  - used to communicate to a single crew
  - the referee will address the crew by name, raise the white flag, and use it to indicate the direction the crew must move
- **RED FLAG**
  - used to communicate to all crews
  - the referee will only raise the red flag during racing to stop the race
- Flags will only be used on the race course in the event that the referee has judged they must intervene for safety or fairness



# REFEREES AND RACING

**San Diego Crew Classic referees prioritize safety, fairness, and ensuring that every competitor can race.**

## **FINISH and OBJECTIONS:**

- **The finish line is marked by large orange buoys in each lane. There will be a large orange flag and a horn for each crew's finish mark.**
- **Once crews have crossed the finish line, they should proceed clear of the finish line area, either to the recovery zone, or cool down area**
- **WHITE FLAG: used to signify that the race is deemed fair and official**
- **RED FLAG: used to signify that a race is under protest/review.**
- **If a red flag is shown after the finish, the results will be held until the situation in question is resolved**
- **If you have an objection or protest:**
  - **Raise your hand to get the attention of a referee and communicate your objection on the water**
  - **Be prepared to explain to the referee how the fairness of your race was affected and what corrective action the referee should take to restore fairness**
  - **A decision will be made at that time and you can choose to accept or decline the judgement**
  - **A crew who wishes to lodge a protest (decline the judgement) may do so via a completed protest form (available from Beachmaster or finish line tower) delivered to the Chief Referee at the finish line tower) within 1 hour of the race finish, along with \$50**
  - **Protests will be reviewed by a jury and the result of the protest will be published pending the outcome of the jury decision**





# EMERGENCIES

Please review our Emergency Procedures for full outlines of inclement weather, medical emergencies, and venue evacuation.

**ALL MEDICAL EMERGENCIES MUST BE CHECKED BY SDCC MEDICAL PERSONNEL**

## WEATHER

- Decisions regarding changes to the racing program due to inclement weather will be made by the Water Operations team in conjunction with the referees

## MEDICAL EMERGENCIES

- First aid staff (RNs), EMS, ambulance and lifeguards will be on site for the duration of the racing program
- First aid tent will be located next to the information tent in the center of the venue

## ON THE WATER SAFETY CONCERNS

- Water Operations and Referees will work together to communicate the safest course of action for athletes and crews during an on the water emergency
- In the immediate absence of a safety marshal, coxswains/athletes should use their best judgement on whether it is safe to launch and/or remain on the water. If it is unsafe to remain on the water, proceed immediately to the nearest shore and await further instructions or guidance from regatta staff or referees



PDF

[DOWNLOAD  
EMERGENCY  
PROCEDURES](#)



# SCHEDULE & PROGRESSIONS

The schedule is now SET and barring emergencies or delays, no further changes will be made.

schedule



[crewclassic.org/schedule](http://crewclassic.org/schedule)

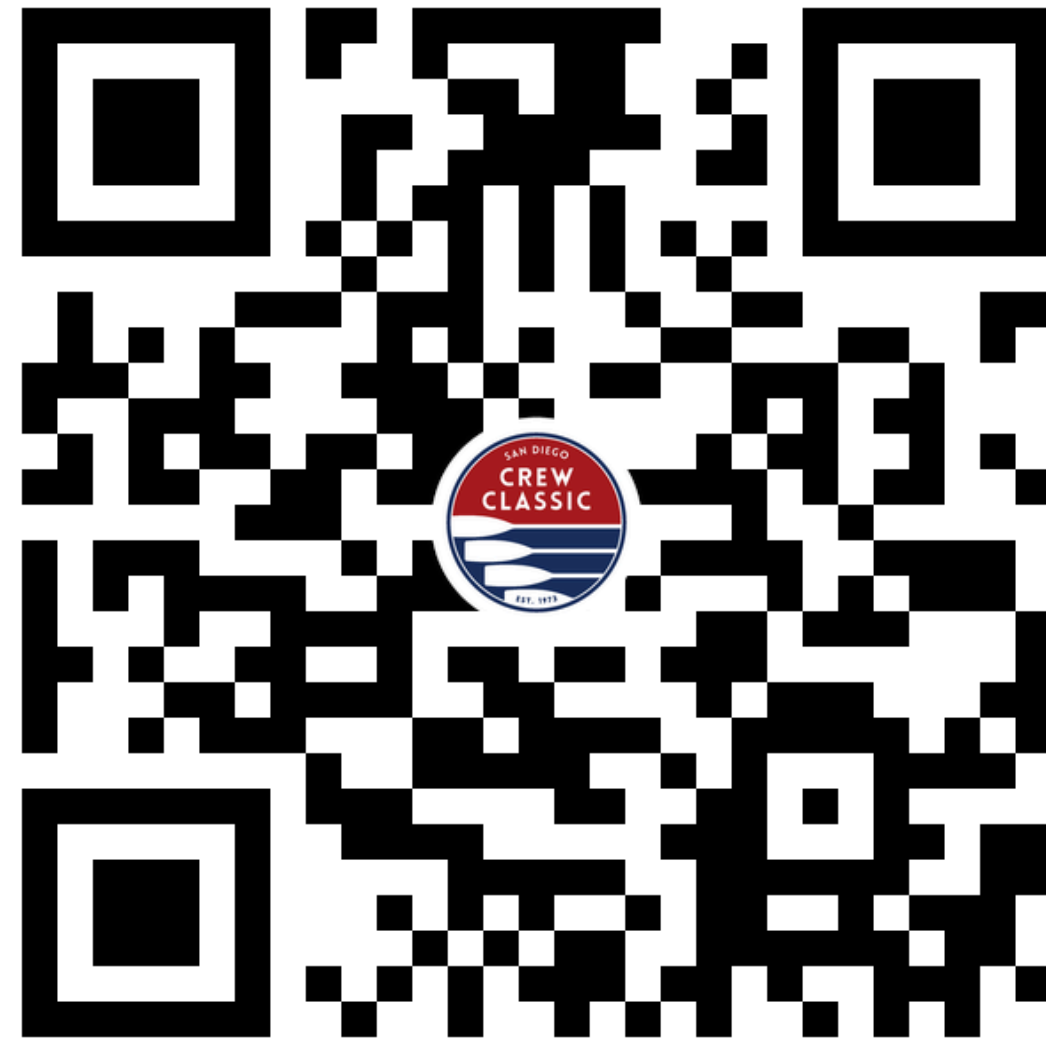




# RESULTS

Results will be posted in real time or as soon as possible following the resolution of any protests

results



[crewclassic.org/results](http://crewclassic.org/results)

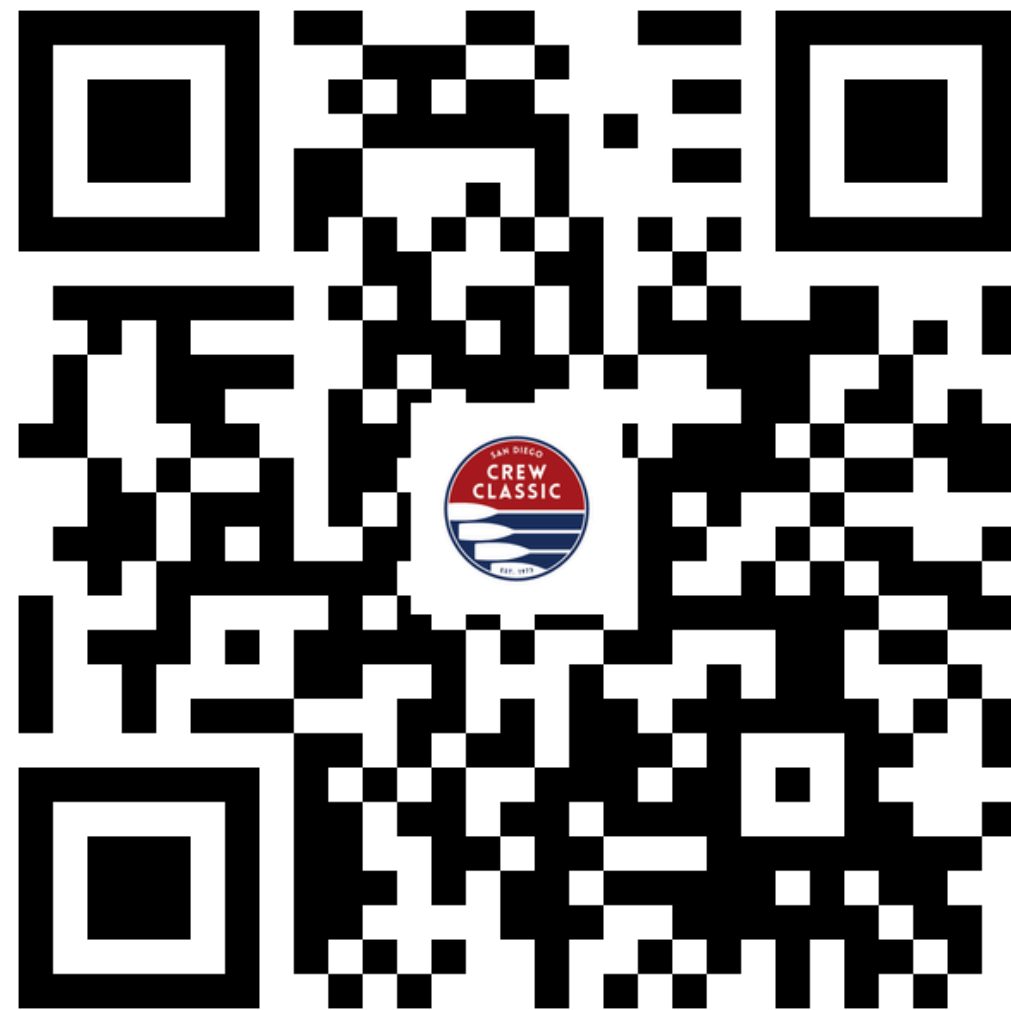
[crewclassic.org/results](http://crewclassic.org/results)



# LIVESTREAM

The livestream will be via **Castr** and will cost **\$15** for the entire weekend.

Livestream



LIVE STREAM

[crewclassic.org/live](https://crewclassic.org/live)





# MEDALS & TROPHIES

## AWARDS SCHEDULE

- It is important that all trophy winners report to the awards paddock on time so we can keep the program on schedule
- A copy of the awards schedule is included in your registration packet
- If you are unable to make your award time let a regatta staff member or volunteer know immediately

## BRICK AND MORTAR AWARDS

- Brick and Mortar medalists should report to the awards paddock to receive their awards immediately after the trophy presentation for their race

## TROPHY SIGN OUT

- Trophies will not be allowed to leave the awards paddock without a verified signature from the coach or team leader of record
- Trophies DO NOT have to be taken back with the winning team





# SAN DIEGO CREW CLASSIC

## QUESTIONS

